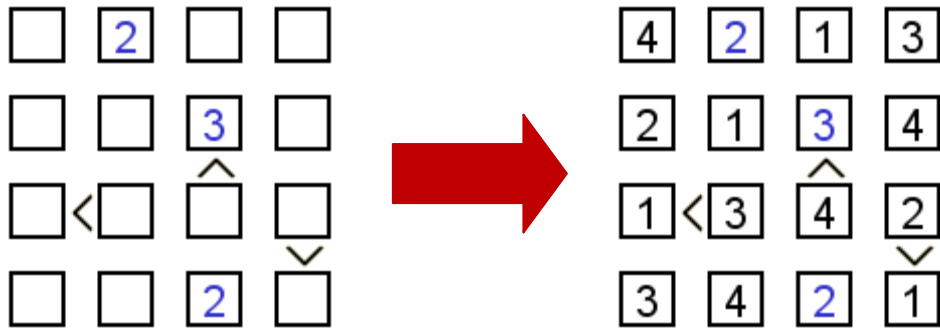
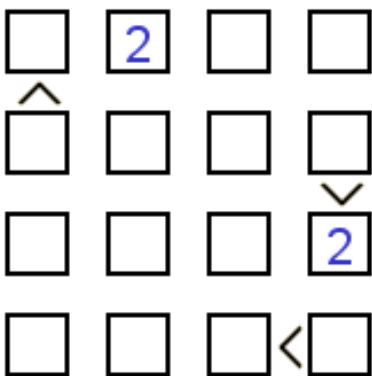


FUTOSHIKI

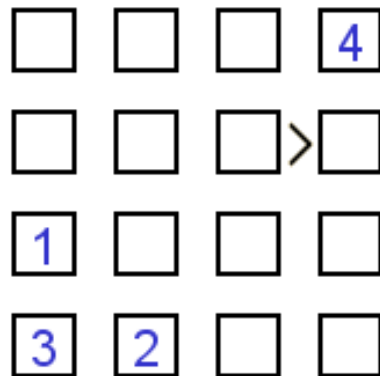
Prazna polja je potrebno zapolniti s števkami od 1 do N, kjer N označuje število vrstic oz. število stolpcev, tako da bo v vsaki vrstici in v vsakem stolpcu vsaka izmed števk nastopala natanko enkrat. Številke morajo hkrati zadoščati zapisanim neenakostim.



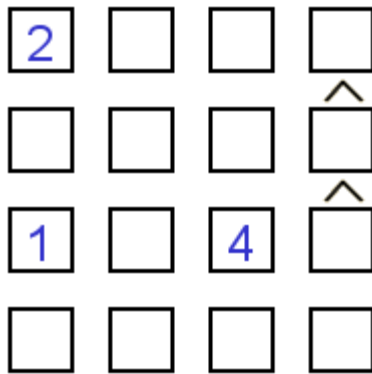
1.



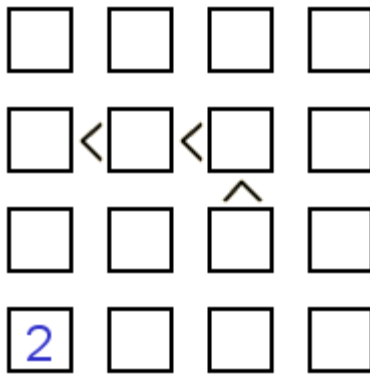
2.



3.

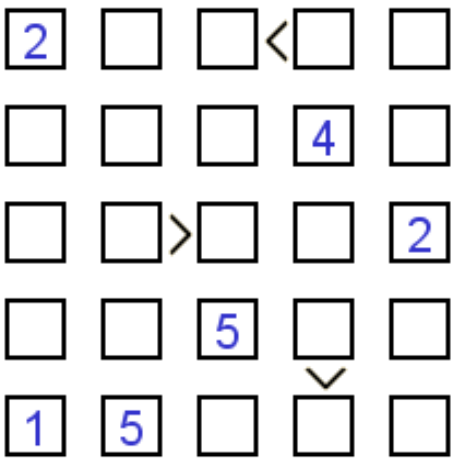


4.

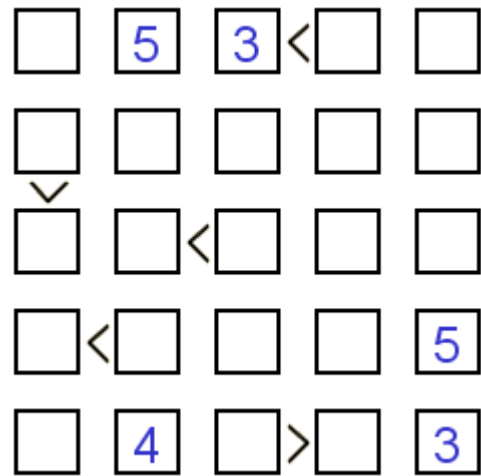


FUTOSHIKI

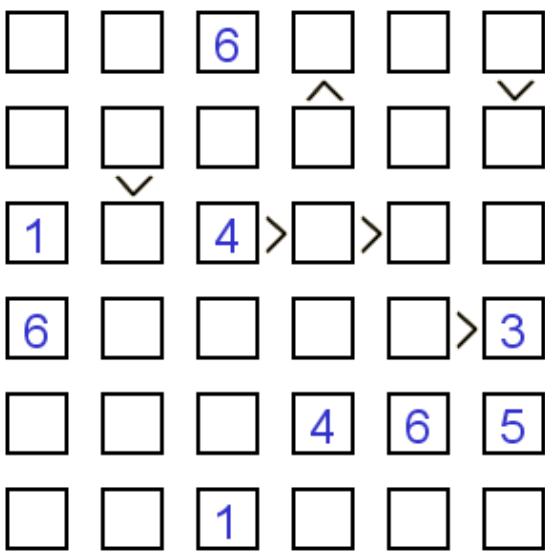
5.



6.



7.



8.

