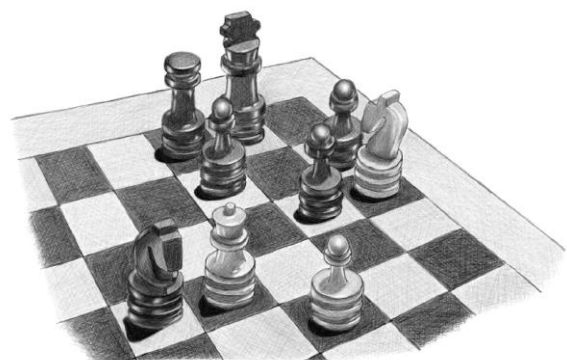


# KAKO TRENIRATI ŠAH?

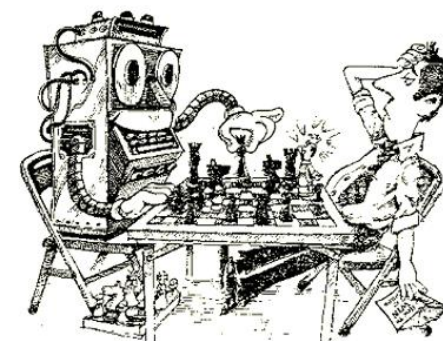
doc. dr. Matej Guid



UNIVERZA  
V LJUBLJANI

Univerza v Ljubljani

februar 2025



# „NESKONČNO“ MOŽNOSTI NA 64 POLJIH

Po štirih potezah belega in po štirih potezah črnega iz začetne pozicije nastane naslednja pozicija. Kako?



# MOŽNOSTI ZA TRENING: CHESS TEMPO

- Reševanje taktičnih problemov je najhitrejša pot do napredka napredovanje...
- Lahko je tudi zabavna! 😊

Chess tactics

chesstempo.com/chess-tactics/95204055

Training - Problems - Playing - Database - Stats - Members - Resources - Forum - Help

00:04

0 comments

50% 50% 2/2

★★★★★

Blitz CHANGE SET

Difficulty Easy

8 7 6 5 4 3 2 1

a b c d e f g h

8 7 6 5 4 3 2 1

a b c d e f g h

NEXT 84667 in set

RETRY

✓ 1599 (+ 41.6)

1211.2 (- 31.5) #95204055

0...xg8 1.xh5

Mate - Lawnmower

Congratulations!

All Time High Tactic Run

6

Get a personal record for number of rated tactic problems correct in a row.  
100 Points

OK

Training - Problems - Playing - Database -

Chess Tactics

Opening Training

Chess Endgames

Guess The Move

Tactical Motifs

Positional Motifs

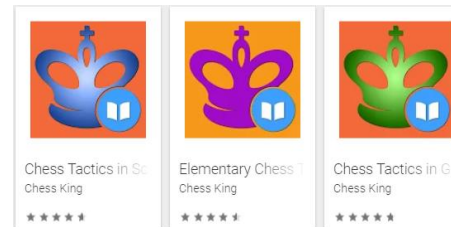
Training Targets

Blitz

Difficulty Easy

# MOŽNOSTI ZA TRENING: CHESS KING

- Res je, učenje šaha je lahko zabavno! 😊
- Treening lahko poteka tudi preko telefona ali tablice!



**Chess King (Learn Tactics & Solve Puzzles)**  
Chess King Board Brain Games  
★★★★★ 8,365  
PEGI 3 Family Friendly  
Contains Ads · Offers in-app purchases  
This app is available for some of your devices  
**Installed**

**MY SUBSCRIPTIONS**  
Chess King Courses (Chess King (Learn Tactics & Solve Puzzles))  
You're subscribed for €10.99 per month. Your next payment is on 3/11/21.  
[MANAGE SUBSCRIPTIONS](#)

All courses in one app

High quality exercises

Graphic hints

Interactive theory

Test mode to check knowledge

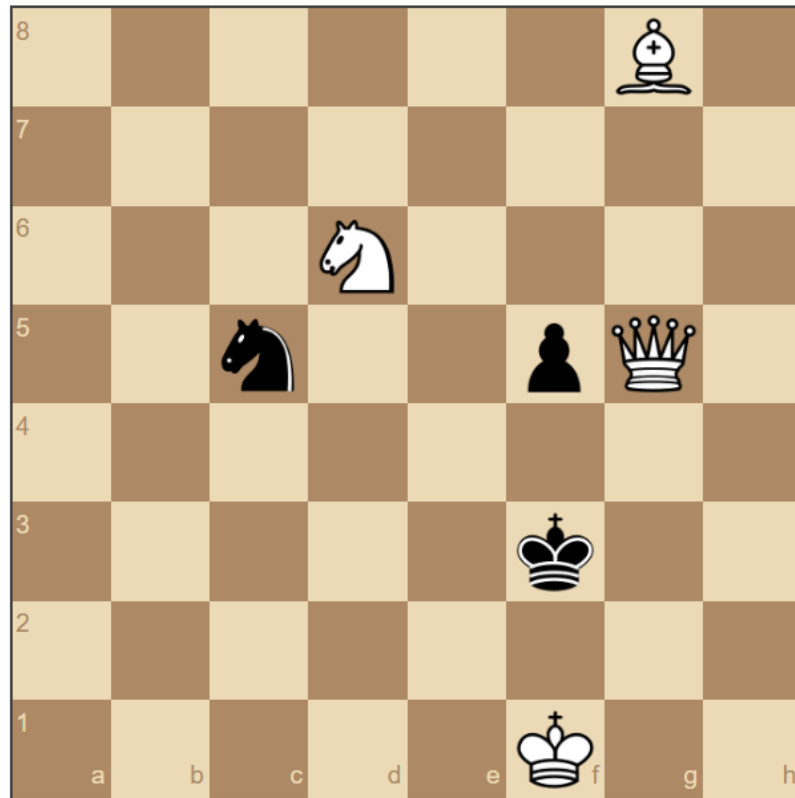
Detailed contents

Last used

| Topic                              | Progress |
|------------------------------------|----------|
| Chess Opening Blunders             | 78%      |
| Capturing Pieces 1 (Chess Puzzles) | 74%      |
| Chess Endgame Studies              | 74%      |
| Mate in 2 (Chess Puzzles)          | 81%      |
| Chess Tactics for Beginners        | 93%      |

- Občutek za sodelovanje in koordinacijo svojih figur

#2219 Checkmate in Two Moves - White to Move



Hint



Mat v 1 potezi: **1-306**















<https://danielmoore.us/chess-puzzles?o&id=1>

Mat v 2 potezah: **307-3718**









<https://danielmoore.us/chess-puzzles?o&id=307>

# SISTEMATIČNO UČENJE TAKTIČNIH MOTIVOV

## Motifs

-  **Advanced pawn** 236,669  
One of your pawns is deep into the opponent position, maybe threatening to promote.
-  **Capture the defender** 33,570  
Removing a piece that is critical to defence of another piece, allowing the now undefended piece to be captured on a following move.
-  **Double check** 20,417  
Checking with two pieces at once, as a result of a discovered attack where both the moving piece and the unveiled piece attack the opponent's king.
-  **Fork** 589,463  
A move where the moved piece attacks two opponent pieces at once.
-  **Kingside attack** 333,751  
An attack of the opponent's king, after they castled on the king side.
-  **Queenside attack** 57,516  
An attack of the opponent's king, after they castled on the queen side.
-  **Skewer** 93,515  
A motif involving a high value piece being attacked, moving out the way, and allowing a lower value piece behind it to be captured or attacked, the inverse of a pin.
-  **Attacking f2 or f7** 26,404  
An attack focusing on the f2 or f7 pawn, such as in the Fried Liver opening.
-  **Discovered attack** 232,302  
Moving a piece (such as a knight), that previously blocked an attack by a long range piece (such as a rook), out of the way of that piece.
-  **Exposed king** 116,695  
A tactic involving a king with few defenders around it, often leading to checkmate.
-  **Hanging piece** 177,882  
A tactic involving an opponent piece being undefended or insufficiently defended and free to capture.
-  **Pin** 264,315  
A tactic involving pins, where a piece is unable to move without revealing an attack on a higher value piece.
-  **Sacrifice** 297,846  
A tactic involving giving up material in the short-term, to gain an advantage again after a forced sequence of moves.
-  **Trapped piece** 58,105  
A piece is unable to escape capture as it has limited moves.

## Advanced

-  **Attraction** 143,953  
An exchange or sacrifice encouraging or forcing an opponent piece to a square that allows a follow-up tactic.
-  **Defensive move** 254,880  
A precise move or sequence of moves that is needed to avoid losing material or another advantage.
-  **Interference** 16,403  
Moving a piece between two opponent pieces to leave one or both opponent pieces undefended, such as a knight on a defended square between two rooks.
-  **Quiet move** 166,283  
A move that does neither make a check or capture, nor an immediate threat to capture, but does prepare a more hidden unavoidable threat for a later move.
-  **Zugzwang** 36,678  
The opponent is limited in the moves they can make, and all moves worsen their position.
-  **Clearance** 56,162  
A move, often with tempo, that clears a square, file or diagonal for a follow-up tactical idea.
-  **Deflection** 177,693  
A move that distracts an opponent piece from another duty that it performs, such as guarding a key square. Sometimes also called "overloading".
-  **Intermezzo** 57,664  
Instead of playing the expected move, first interpose another move posing an immediate threat that the opponent must answer. Also known as "Zwischenzug" or "in between".
-  **X-Ray attack** 14,325  
A piece attacks or defends a square, through an enemy piece.

lichess.org

PLAY PUZZLES LEARN WATCH COMMUNITY TOOLS



Puzzle #5SbsY

Rating: hidden

Played 888 times



From game 3+2 • Blitz

○ Iluisvill (1929)

● GASPADAREK (1977)



Rated

2293

### « KINGSIDE ATTACK

An attack of the opponent's king, after they castled on the king side. [Example](#)



Jump to next puzzle immediately

Difficulty level

Normal



+6

# ANALIZA LASTNIH PARTIJ

- Igranje šaha je tudi del treninga! 😊
- Pomemben vir napredka je lahko tudi analiza lastnih partij



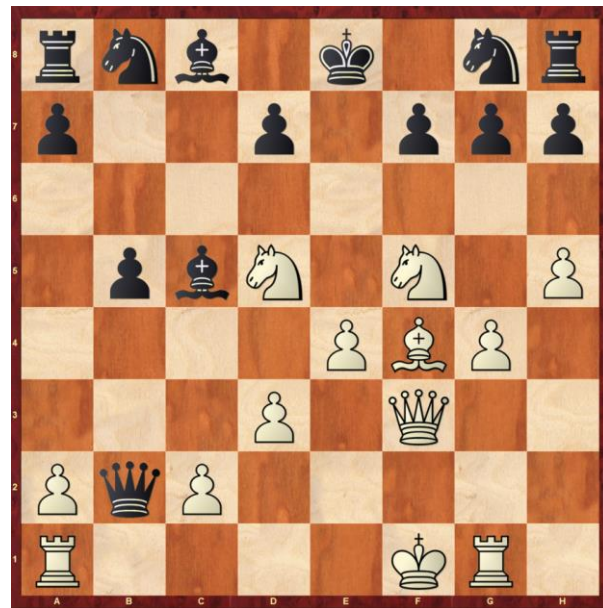
pregled otvoritvenih potez



analiza s šahovskimi programi

*“The most important feature of the Chess position is the activity of the pieces.”*

## The Immortal Game



A. Anderssen – J. Kieseritzky, London 1851

Celotna partija s komentarji:  
<https://lichess.org/study/agESaWbF/cScPsrC4>

## The Evergreen Game



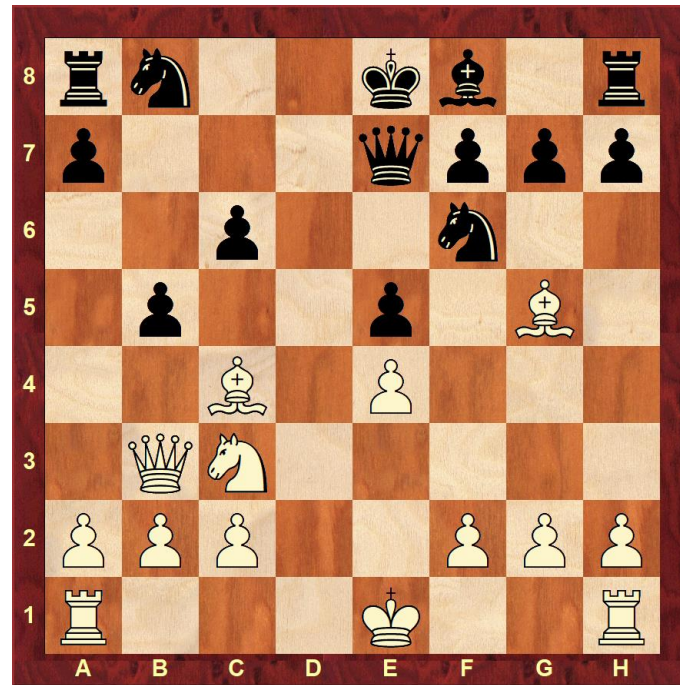
A. Anderssen – J. Dufresne, Berlin 1852

Celotna partija s komentarji:  
<https://lichess.org/study/9gPyZzno/qS2RPxw1>

*“Tactics flow from a superior position.”*



## Opera game

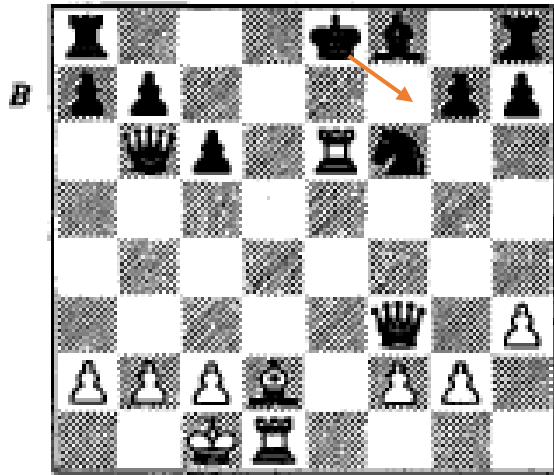


Celotna partija s komentarji:

<https://lichess.org/study/dbErLC0n/7N5gP1WT>

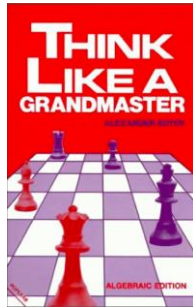
P. Morphy – Duke Karl / Count Isouard, Paris 1858

# UČENJE S POMOČJO KNJIG



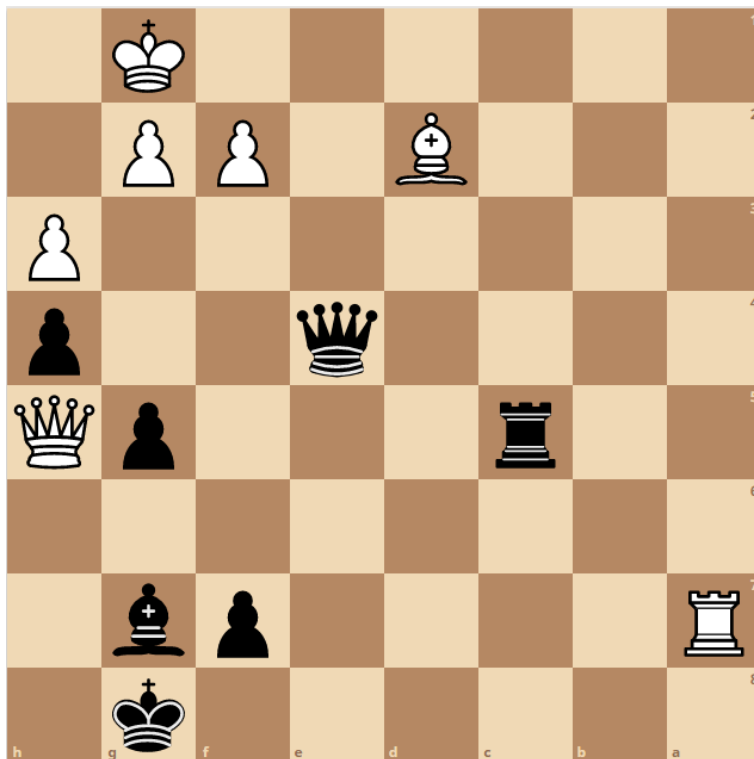
Velemojster Kotov:

- najprej identificirajte kandidatske poteze
- preglejte kandidatske poteze in izgradite „drevo preiskovanja“



Kotov A. Think Like a Grandmaster. Batsford, 1975.

# ISKANJE KOMBINACIJ JE LAHKO IZZIV



Taktični problem: Črni na potezi zmaga.

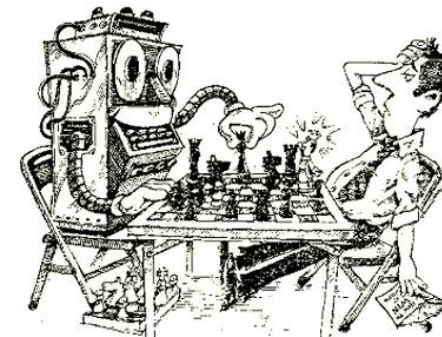
Ali lahko vizualizirate naslednje variante?

**1...Tc5-c1+ 2.Ld2xc1** (edini odgovor, ki ne izgubi) **De5-e1+**

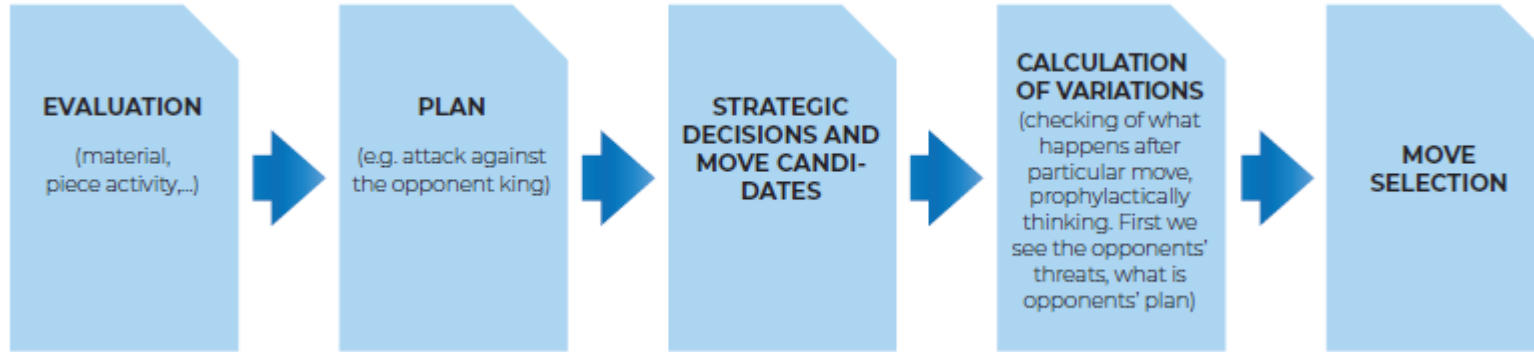
**3.Kg1-h2 Lg7-e5+**, in črni zmaga po **4.g2-g3 De1-f2+**

**5.Kh2-h1 Df2-f1+ 6.Kh1-h2 h4xg3# mat.**

Kaj je pri tej rešitvi narobe? 😊



# IZBIRA POTEZE PRI ŠAHU



+0.8 Stockfish 11+ HCE  
Globina 26 CLOUD

1. ♖h4 ♜xe2 2. ♜xe2 a6 3. ♖f3 ♜e4 4. ♜d3 ...

| Poteza | Igre | Belj / Remi / Črni |
|--------|------|--------------------|
| ♖h4    | 9    | 67% / 33%          |
| ♖b5    | 1    | 100%               |
| ♜d3    | 1    | 100%               |

Najboljše partije

|      |                    |         |      |
|------|--------------------|---------|------|
| 2696 | Karpov, Anatoly    | 1-0     | 2000 |
| 2632 | Lautier, Joel      | 1-0     | 2002 |
| 2645 | Zvjaginsev, Vadim  | 1/2-1/2 | 2002 |
| 2644 | Lutz, Christopher  | 1-0     | 2002 |
| 2736 | Wei Yi             | 1-0     | 2019 |
| 2536 | Praggnanandhaa, R. | 1-0     | 2019 |
| 2667 | Fressinet, L.      | 1-0     | 2017 |
| 2584 | Grigoryan, K2.     | 1-0     | 2017 |

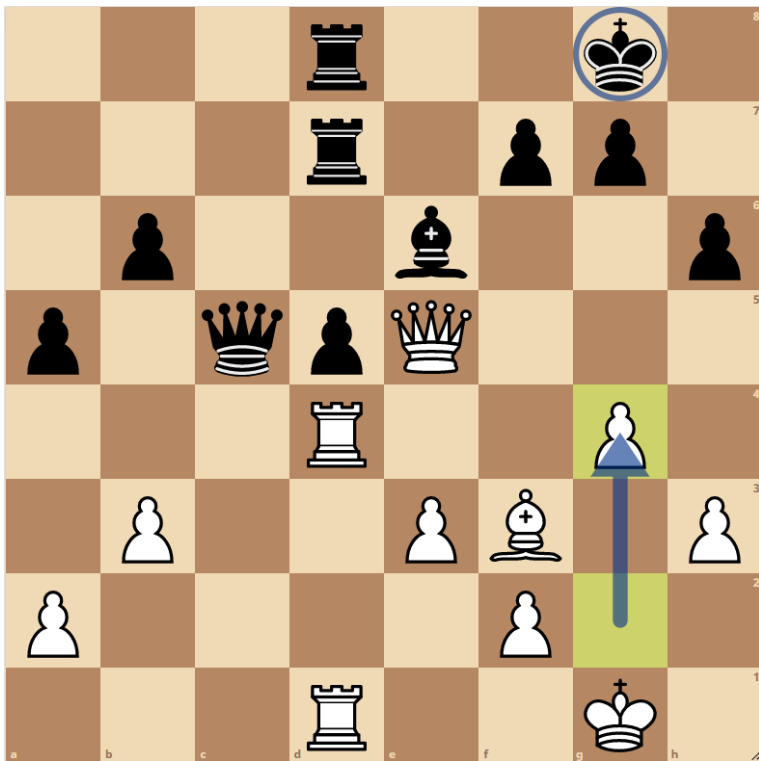
+0.7 Stockfish 13+ NNUE  
Globina 19/23, 1182 knodi

15. ♖b5 ♜e4 16. ♜fd4 ♜xe2 17. ♜xe2 ♜d7 1...

1. c4 c5 2. ♜f3 ♜c6 3. ♜c3 ♜f6 4. e3 e6  
5. d4 d5 6. cxd5 exd5 7. ♜b5 ♜d6 8. dxc5  
♜xc5 9. O-O O-O 10. b3 ♜g4 11. ♜b2 ♜c8  
12. ♜c1 ♜d6 13. h3 ♜h5 14. ♜e2 ♜b8  
15. ♖h4 ♜d6 16. g3 ♜xe2 17. ♜xe2 ♜e6  
18. ♜g2?! Inaccuracy. Bxf6 was best. (  
18. ♜xf6) 18... ♜e5 19. ♜xe5 ♜xe5 20. ♜f3  
♜e4 21. ♜c3 ♜e6 22. ♜d3 ♜e5 23. ♜xe5  
♜ve5 24. ♜c2 ♜fd8 25. ♜d1 ♜e6 26. ♜e2  
E10 Tarrasch Defense: Symmetrical Va

# ŠAHOVSKA STRATEGIJA IN PRINCIP DVEH SLABOSTI

Predlagajte načrt za belega.



Botvinnik - Zagoriansky Sverdlovsk 1943

Celotna partija [s komentarji:](https://lichess.org/study/0DbfK1hG)

<https://lichess.org/study/0DbfK1hG>

Bele figure napadajo črnega d5-kmeta, vendar ga ne morejo vzeti.

A črne figure zasedajo pasiven položaj, njihov doseg je omejen in črni nima protiigre.

Da bi izboljšal možnosti za zmago, mora beli ustvariti drugo slabost v črni poziciji...

Na daminem krilu in v središču ni možnosti, da bi ustvarili drugo slabost. Vendar...

**25.g2-g4!**

**Druga slabost je črni kralj!** Oslabitev belega kralja je nepomembna – črne figure so zaposlene na drugem delu šahovnice in ga ne morejo ogroziti.

# VAJA I: ALI SI LAHKO ZAPOMNITE 20-POTEZNO ŠAHOVSKO PARTIJO?

Šah je logična igra! Opremo se lahko na vzorce in motive.



The image shows a screenshot of a chess game interface. On the left is a chessboard with pieces in their starting positions. The king is on e8, queen on d8, rooks on a8 and h8, knights on g8 and f8, bishops on c8 and f8, and pawns on a7, b7, c7, d7, e7, f7, g7, and h7. The king is highlighted with a red glow, and the queen is highlighted with a green glow. On the right is a list of 20 moves in algebraic notation. The moves are: 1. e4 e5 2. d3 dxc6 3. c4 c5 4. c3 d6 5. d4 exd4 6. cxd4 d4b4+ 7. dxc3 dxe4 8. O-O dxc3 9. bxc3 dxc3 10. b3 dxa1 11. dxf7+ d8f8 12. d5g5 d7e7 13. d5e5 d4xd4 14. d5g6 d5 15. f3f3+ d5f5 16. d5xf5 d5xe5 17. d5e6+ d5f6 18. d5xf6 gxf6 19. d5xf6+ d5e8 20. d5f7#. The FEN string at the bottom is r2qk2r/ppp1nQ1p/4B3/3p4/8/8/P4PPP/5RK1 b - - 2 20.

Stockfish 13+ NNUE  
v lokalnem brskalniku

1. e4 e5 2. d3 dxc6 3. c4 c5 4. c3 d6 5. d4 exd4 6. cxd4  
d4b4+ 7. dxc3 dxe4 8. O-O dxc3 9. bxc3 dxc3 10. b3 dxa1  
11. dxf7+ d8f8 12. d5g5 d7e7 13. d5e5 d4xd4 14. d5g6 d5  
15. f3f3+ d5f5 16. d5xf5 d5xe5 17. d5e6+ d5f6 18. d5xf6 gxf6  
19. d5xf6+ d5e8 20. d5f7#

FEN r2qk2r/ppp1nQ1p/4B3/3p4/8/8/P4PPP/5RK1 b - - 2 20

## VAJA 2: POSKUSITE SI ZAPOMNITI ZMAGOVITO KOMBINACIJO

Črni na potezi zmaga. Lahko najdete zmagovito kombinacijo? Si jo lahko zapomnite?

Stockfish 13+ NNUE  
v lokalnem brskalniku

1. d4 f5 2. c4 ♗f6 3. ♘c3 e6 4. ♗f3 d5 5. e3  
c6 6. ♘d3 ♙d6 7. O-O O-O 8. ♗e2 ♗bd7  
9. ♗g5 ♙xh2+ 10. ♔h1 ♗g4 11. f4 ♙e8  
12. g3 ♙h5 13. ♗g2

FEN r1b2rk1/pp1n2pp/2p1p3/3p1pNq/ZPP1Pn1/3BP1P1/PP2N1Kb/R1BQ1R2 b -- 2 13

## VAJA 3: USTAVITE KMETA

Beli na potezi. Ali lahko ustavi črnega kmeta in remizira partijo?

