



What do you think of, when you see these pictures?



# Antarctica

Katja Belak, Mirjam Šenk, LS5

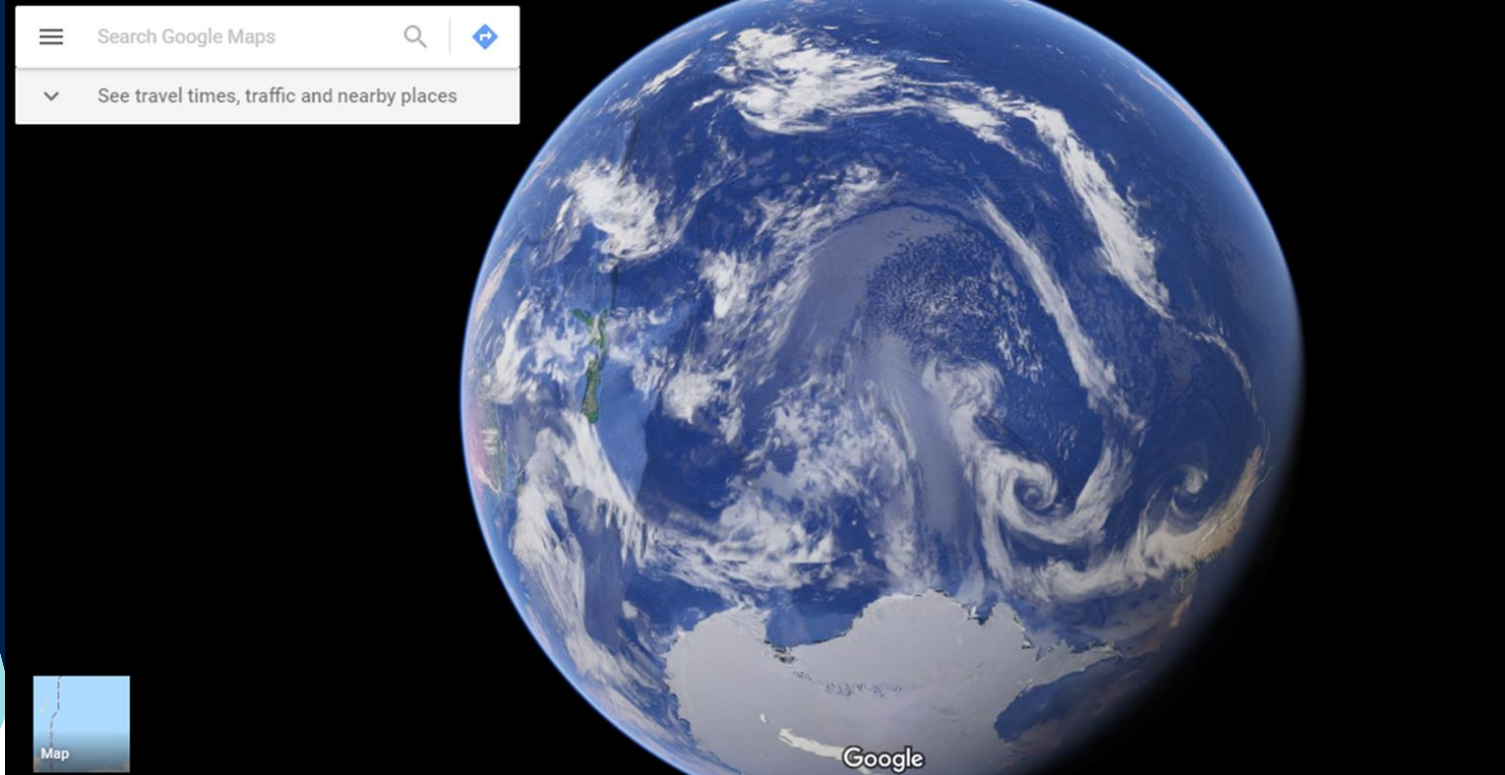
Jezikovno in medkulturno ozaveščanje /  
Linguistic and Intercultural Awareness

April, 2023

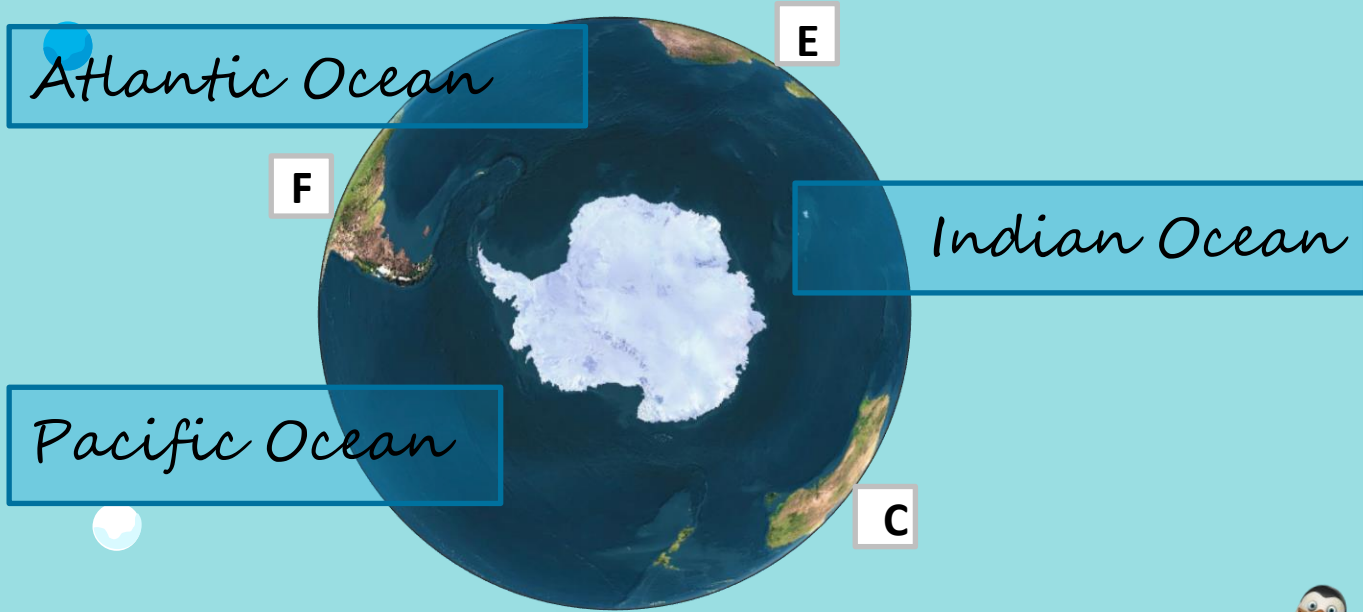


# Google Earth

[Google Earth](#)



Now let's look at Antarctica from another perspective. Let's look at it from the bottom up. Write the letters in the green squares that denote the continents bordering Antarctica. In the blue rectangles, write the names of all three oceans that surround it.



- A** - Europe
- B** - Asia
- C** - Australia
- D** - North America
- E** - Africa
- F** - South America



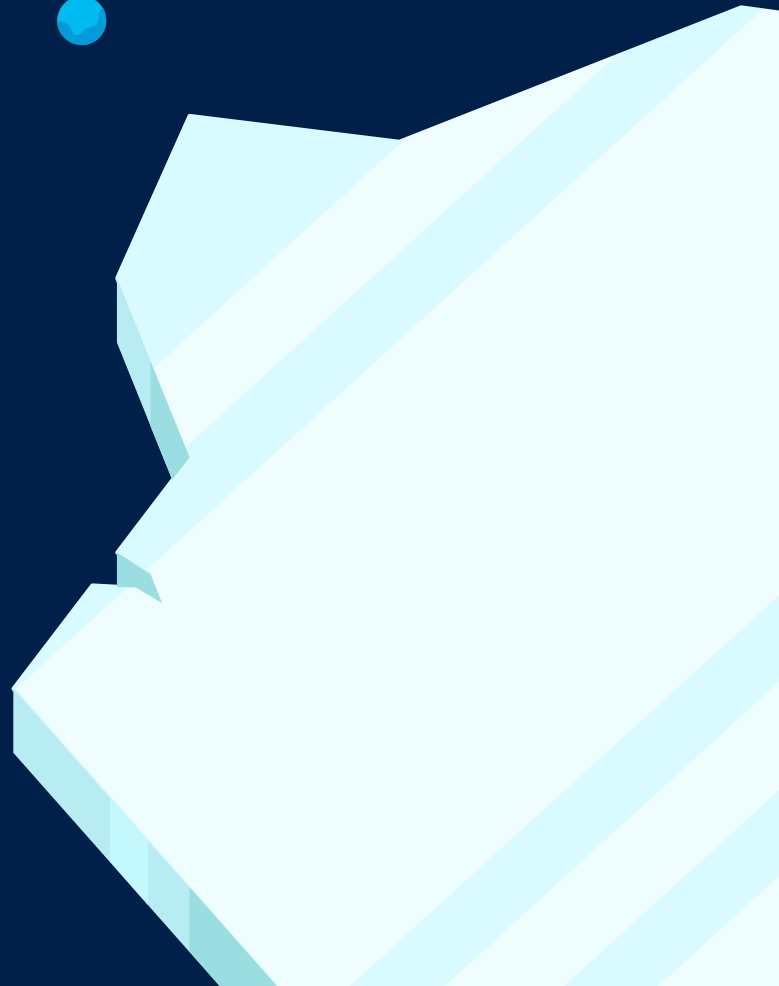


**Work in groups: True or false  
facts about Antarctica**  
**Tick – The statement is false**  
**Cross – The statement is true**



1.

Antarctica has some of the driest places on earth.

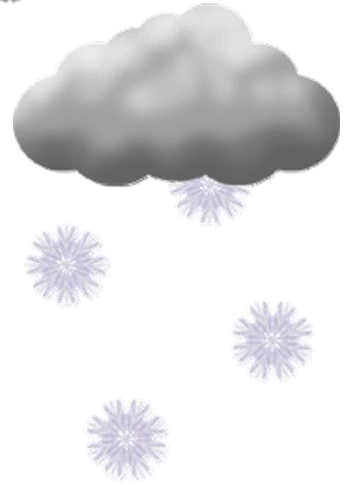




41°C

-35°C

150 mm/m<sup>2</sup> /month



15°C

-89°C

160 mm/m<sup>2</sup> /year  
=desert

# 2.

Antarctica is the windiest place on earth.



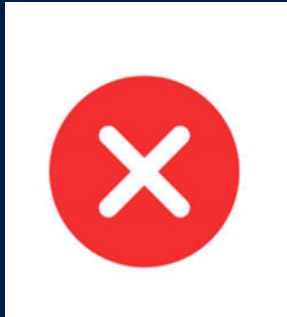
Wind speeds reach up to 200 miles per hour.

The windiest City on Earth is Wellington, New Zealand.



# 3.

Antarctica has about 50% of the planet's freshwater ice.



The continent as a whole possesses about 90% of the planet's freshwater ice and around 70% of the total fresh water on earth.

If all the ice of Antarctica melted, the oceans would rise by huge amount – 60 to 65m.



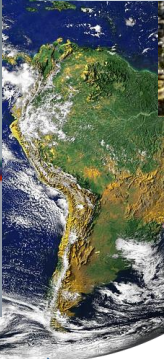


# 4.

Antarctica is roughly the size of USA.

At over 14 million km<sup>2</sup> it's almost twice the size of the United States.





Lichens and terrestrial algae

Shrubs, mosses, flowers

A continent surrounded by sea  
Frozen ocean

S  
Antarctica

What do you think is the reason?  
Why is it so cold in Antarctica?





# Pair activity:

Animal cards



59

The largest animal on earth.

## BLUE WHALE



Blue whales are mostly solitary, so they live alone or in pairs.

They can eat up to 8 tons of food per day.

They stay in Antarctica for half a year to feed. They spend the second half of the year in tropical waters.

### Basic information



Lifespan - 80 years.



They feed on small crustaceans.

They can weigh up to 160 tons (equal to 30 adult elephants).

They grow up to 30m in length.



## CRABEATER SEAL



They are classified as marine mammals, as they breathe with lungs, and feed on milk.

They spend most of their lives in the open sea.



### Basic information



Life expectancy - up to 56 years.



They feed on fish, squid, shellfish and crustaceans.

It is the most widespread type of seal. There are 30 million of them in the world.

They often find a sheet of ice that they carry across the sea. They rest on it or give birth to the young on it.



## EMPEROR PENGUIN

The biggest penguin  
in the world.

They can't fly.

Adults have no natural  
enemies. Young birds  
can be attacked by a  
robin's gull.

### Basic information



Lifetime - 20 years.

It feeds on fish, shrimp and  
squid.



Between 1.1m and 1.3m tall.



The only land animal  
that lives in Antarctica  
in summer and winter.



it can dive 300m deep.

## THE POLAR BEAR



Thick fur and a thick layer of fat protect it from the cold.



To cool off, he often bathes in the sea.

It lives in and alongside the Arctic Ocean.

### Basic information



Life span - 30 years.

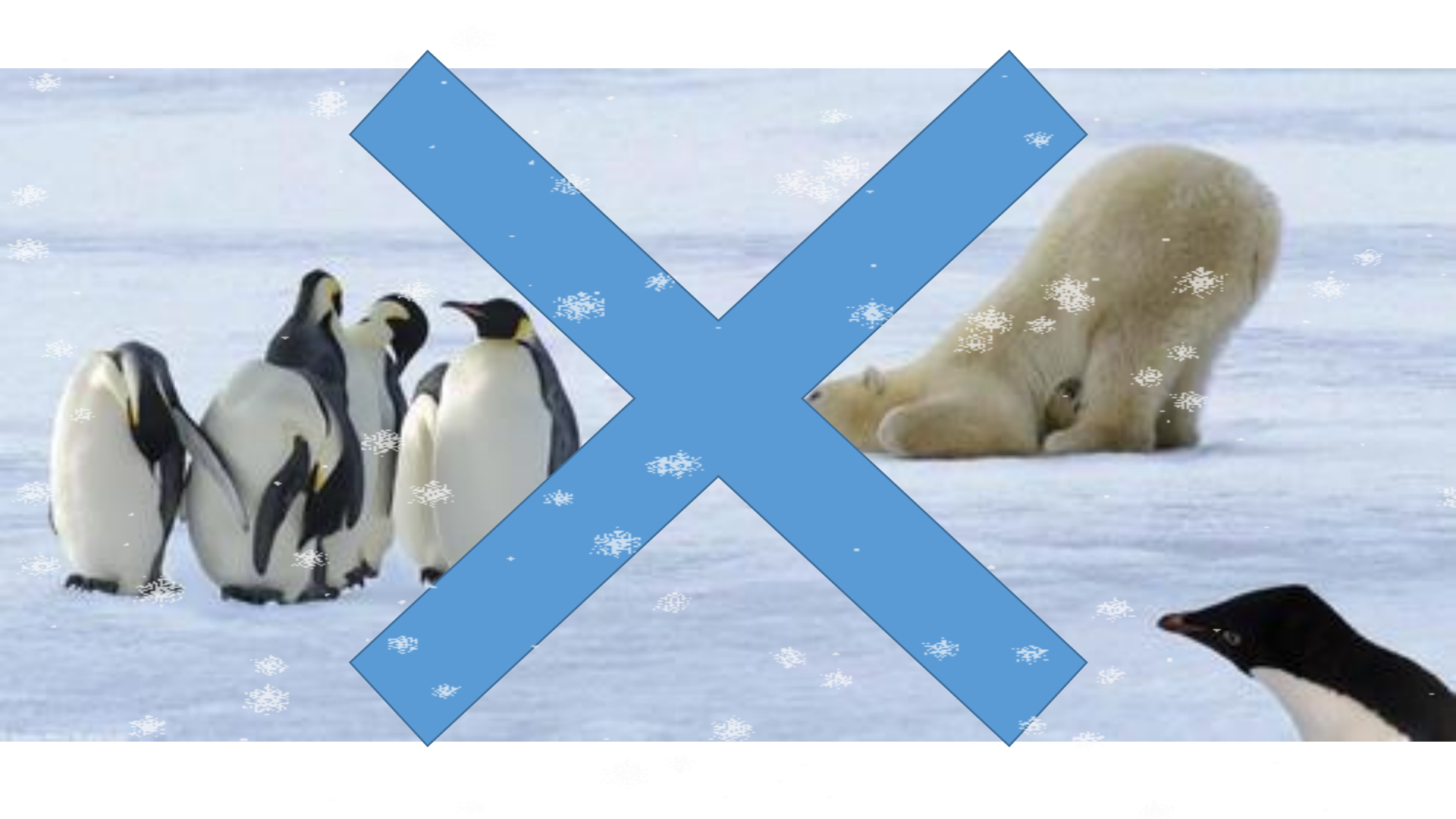


It preys on fish, seabirds and seals.

Adult males weigh from 400 to 600 kg. Females weigh from 200 to 300 kg.



It is the third largest land animal in the world.



# Discovering Antarctica

Antarctica wasn't discovered until 1820.

The people who travel to or live in Antarctica fall into two main groups, those who live and work on scientific research stations or bases, and tourists.

- It has no permanent residents, no towns or cities, no commercial industries.



McMurdo Station – the closest Antarctica gets to having a town.

- There are around 66 scientific bases, of which 37 are occupied year round.
- There are about 4,000 people throughout the summer months and about 1,000 over winter each year.

# Work in groups:

Imagine, that you are a meteorologist, carrying out research on a research station on Antarctica.

What would a day in your life look like?

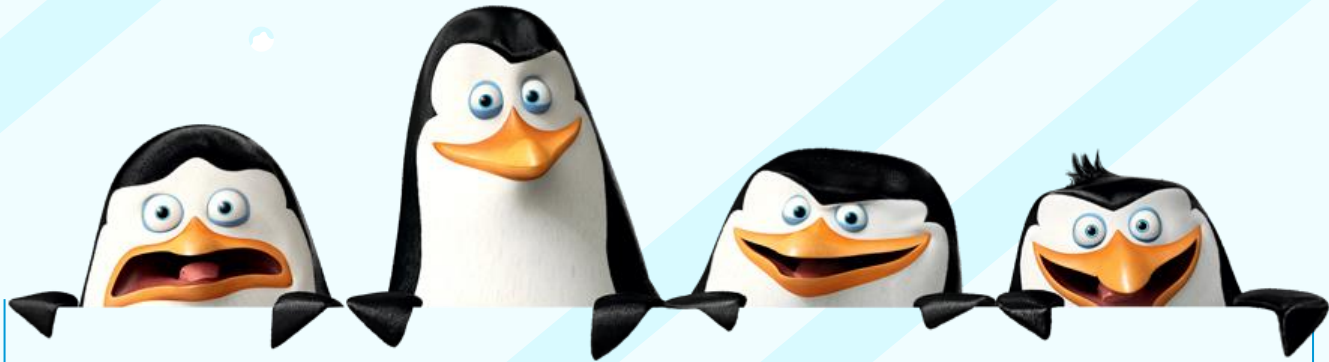






# Aurora





*Thank you for  
your attention!*



**HIGH FIVE!!!**

# Sources

[https://www.coolantarctica.com/Antarctica%20fact%20file/science/can\\_you\\_live\\_in\\_antarctica.php](https://www.coolantarctica.com/Antarctica%20fact%20file/science/can_you_live_in_antarctica.php)

<https://www.reuters.com/article/us-work-antarctica-scientist-idUSL3021165220070430>

<https://www.hurtigruten.com/en-us/expeditions/stories/fifteen-interesting-facts-about-antarctica/>

[https://www.coolantarctica.com/Antarctica%20fact%20file/science/global\\_warming.php](https://www.coolantarctica.com/Antarctica%20fact%20file/science/global_warming.php)

<https://www.wunderground.com/cat6/Life-and-Work-Frozen-Continent-Antarctic-Research-Stations>

<https://www.nationalgeographic.co.uk/science-and-technology/2020/04/isolation-extreme-what-life-spending-winter-earths-most-inaccessible>

<https://www.insider.com/daily-life-in-antarctic-research-stations-2018-11#some-researchers-focus-on-how-the-effects-of-climate-change-such-as-warming-waters-and-ocean-acidification-are-affecting-marine-animals-33>

<https://www.antarctica.gov.au/about-antarctica/people-in-antarctica/clothing/>