

3. PREVERJANJE ZNANJA iz matematike (A)

Ime in priimek:

Resitve

Razred: 7.	Število točk: od 46
Datum: 20. 2. 2023	Število doseženih točk:

50 – 64,99% (zad 2), 65-79,99% (dob 3), 80 – 89,99% (pdb 4), 90 – 100% (odl 5)

1. Izračunaj! (8 točk)

$$a) \frac{3}{12} + \frac{5}{12} = \frac{8}{12} = \frac{2}{3} \quad (1t)$$

$$b) \frac{13}{5} + 1\frac{3}{4} + 5\frac{7}{8} = 2\frac{3}{5} + 1\frac{3}{4} + 5\frac{7}{8} =$$

$$= 2\frac{24}{40} + 1\frac{30}{40} + 5\frac{35}{40} =$$

$$= 8\frac{89}{40} = 10\frac{9}{40} \quad (1t)$$

$$c) \frac{12}{5} - \frac{7}{3} = \frac{36}{15} - \frac{35}{15} = \frac{1}{15} \quad (1t)$$

$$d) 6\frac{1}{2} - 2\frac{3}{4} = 6\frac{2}{4} - 2\frac{3}{4} =$$

$$= 5\frac{6}{4} - 2\frac{3}{4} = 3\frac{3}{4} \quad (1t)$$

$$e) 6 - 3\frac{3}{7} = 2\frac{4}{7} \quad (1t)$$

$$+ \begin{array}{r} 73,600 \\ 9,784 \\ \hline 83,384 \end{array}$$

$$f) 73,6 + 9,784 = 83,384 \quad (1t)$$

$$g) 0,9 \cdot 0,04 = 0,036 \quad (1t)$$

$$h) 1,8 : 0,02 = 90 \quad (1t)$$

$$180 : 2 = 90$$

2. Izračunaj vrednost izrazov: (4 točke)

$$a) 9,2 - 4,2 \cdot 0,5 + 1,05 : 0,5 =$$

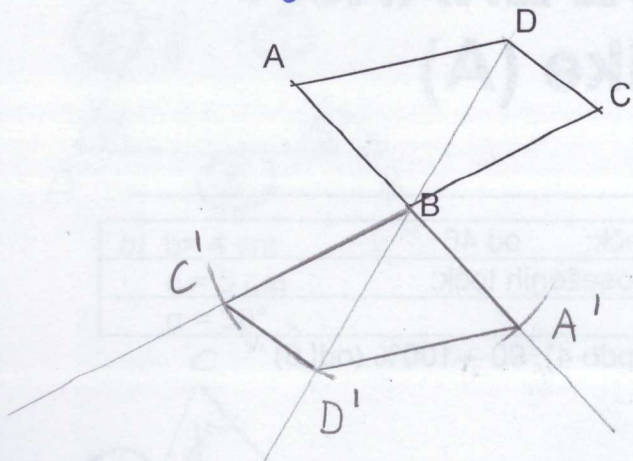
$$b) 12 - (3\frac{1}{8} - (4\frac{3}{4} - 2\frac{1}{3})) =$$

3. **Prezrcali in zapiši z matematičnimi znaki:** (6 točk)

a) štirikotnik ABCD čez točko B

Zapis:

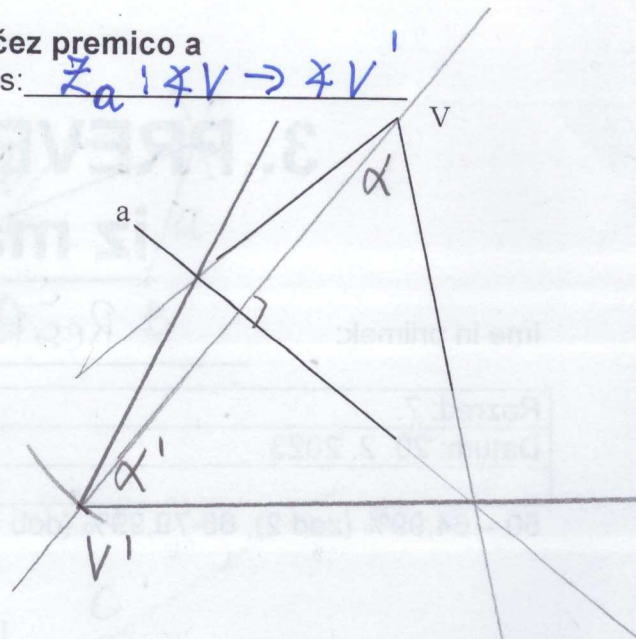
$\sigma_B : ABCD \rightarrow A'B'C'D'$



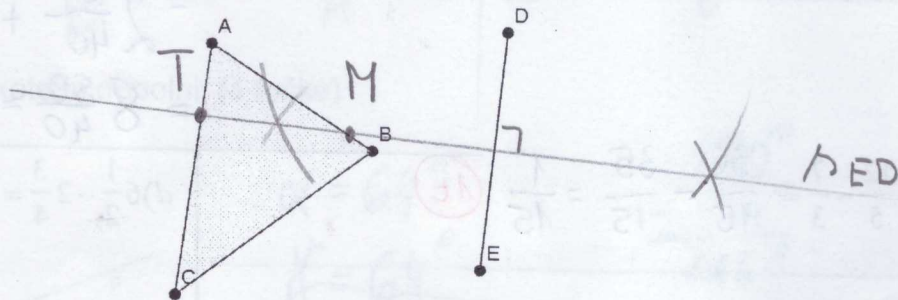
b) kot čez premico a

Zapis:

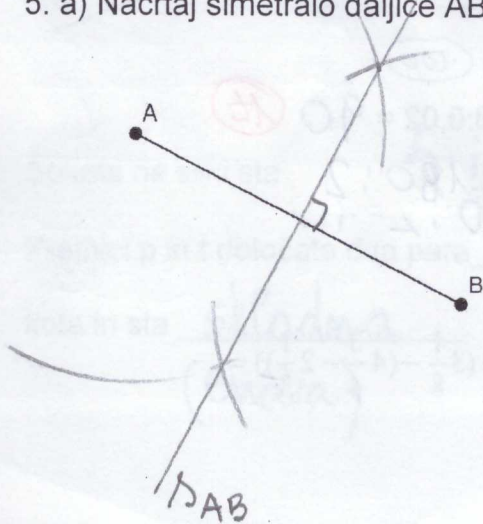
$\sigma_a : \sphericalangle V \rightarrow \sphericalangle V'$



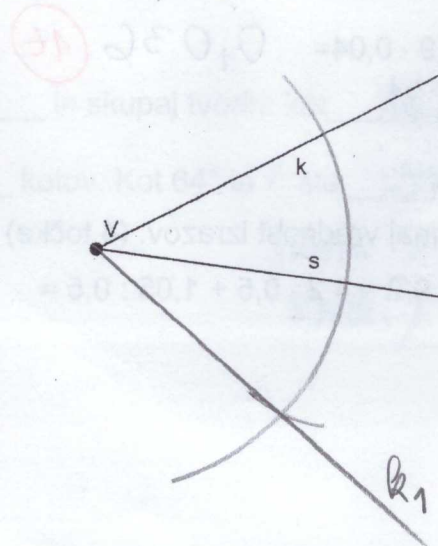
4. Na trikotnikovih straneh **določi tiste točke**, ki so **enako oddaljene** od krajišč daljice DE. (4 točke)



5. a) Načrtaj simetralo daljice AB.

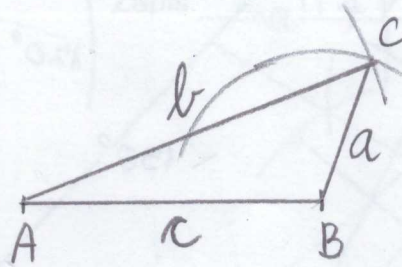
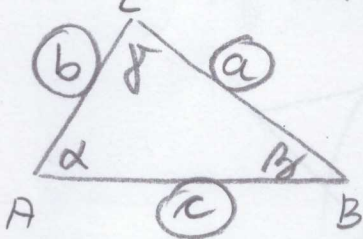


b) Na sliki je en krak kota in simetrala. **Načrtaj drugi krak tega kota.** (3 točke)

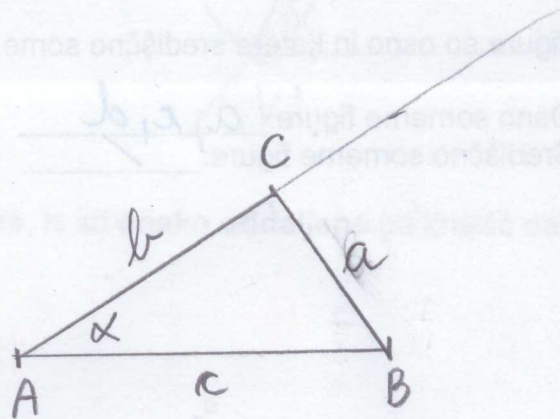
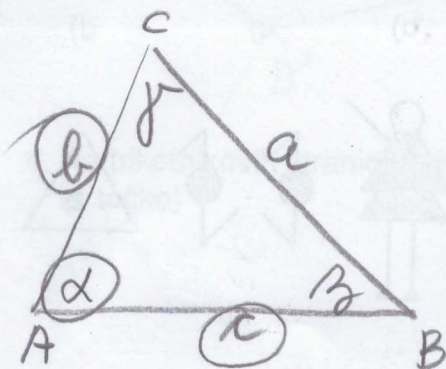


9. Načrtaj trikotnika (6 točk)

- a) $a = 2 \text{ cm}$
 $b = 0,5 \text{ dm} = 5 \text{ cm}$
 $c = 40 \text{ mm} = 4 \text{ cm}$

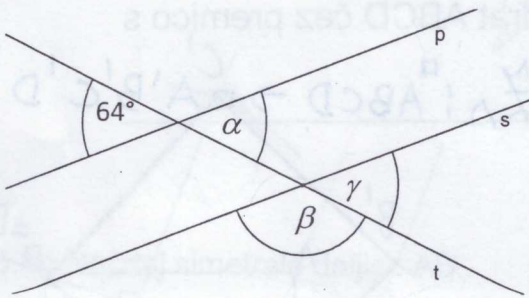


- b) $b = 4 \text{ cm}$
 $c = 5 \text{ cm}$
 $\alpha = 30^\circ$



10. Izračunaj neznane kote in dopolni. (4 točke)

p || s



$\alpha = 64^\circ$
 $\gamma = 64^\circ$
 $\beta = 116^\circ$

$$\begin{array}{r} 180^\circ \\ - 64^\circ \\ \hline 116^\circ \end{array}$$

Sokota na sliki sta β in γ in skupaj tvorita kot 180° .

Premici p in t določata dva para SOVRŠNIH kotov. Kot 64° in γ sta izmenična

kota in sta skladna
(enaka)

(kota z vzporednimi kraki)

SKUPINA

$$200 : 8 = 25$$

B a)

$$\begin{aligned} & 2\frac{4}{9} - \left(1\frac{1}{3} + \frac{1}{6}\right) = \\ & = 2\frac{4}{9} - \left(1\frac{2}{6} + \frac{1}{6}\right) = \\ & = 2\frac{4}{9} - 1\frac{3}{6} \text{ (It)} \\ & = 2\frac{8}{18} - 1\frac{9}{18} = \\ & = 1\frac{26}{18} - 1\frac{9}{18} \\ & = \frac{17}{18} \text{ (It)} \end{aligned}$$

b)

$$\begin{aligned} & 3,75 + \left(1\frac{1}{8} + \left(6\frac{1}{4} - 2\frac{3}{12}\right)\right) - \frac{12}{100} \\ & = 3\frac{3}{4} + \left(1\frac{1}{8} + \left(6\frac{3}{12} - 2\frac{3}{12}\right)\right) - \frac{12}{100} \\ & = 3\frac{3}{4} + \left(1\frac{1}{8} + 4\right) - \frac{12}{100} \text{ (It)} \\ & = 3\frac{3}{4} + 5\frac{1}{8} - \frac{12}{100} = \\ & = 3\frac{150}{200} + 5\frac{25}{200} - \frac{24}{200} = \\ & = 8\frac{175}{200} - \frac{24}{200} = \\ & = 8\frac{151}{200} \text{ (It)} = 8,755 \end{aligned}$$

SKUPINA A

$$\begin{aligned} \text{a) } & 9,2 - 4,2 \cdot 0,5 + 1,05 : 0,5 = \\ & = 9,2 - 2,1 \text{ (0,5)} + 2,1 \text{ (0,5)} = \\ & = 7,1 + 2,1 = \\ & = \underline{9,2} \text{ (It)} \end{aligned}$$

$$\frac{4,2 \cdot 0,5}{2,10}$$

$$\frac{10,5 : 5 = 2,1}{= 5}$$

$$\begin{aligned} \text{b) } & 12 - \left(3\frac{1}{8} - \left(4\frac{3}{4} - 2\frac{1}{3}\right)\right) = \\ & = 12 - \left(3\frac{1}{8} - \left(4\frac{9}{12} - 2\frac{4}{12}\right)\right) = \\ & = 12 - \left(3\frac{1}{8} - 2\frac{5}{12} \text{ (0,5)}\right) = \\ & = 12 - \left(3\frac{3}{24} - 2\frac{10}{24}\right) = \\ & = 12 - \left(2\frac{27}{24} - 2\frac{10}{24}\right) = 12 - \frac{17}{24} \text{ (0,5)} = 11\frac{7}{24} \text{ (It)} \end{aligned}$$